

Thursday April 9, 2026

11.00 Welcome and introduction
Michiel van der Vlist, UMC Utrecht

Session I - Immune responses out of control

Chair: Gwenny Verstappen

11.15 **Autoreactive B cell responses in human autoimmune disease; what makes them different?**
Rene Toes, LUMC, Leiden

12.00 **New mechanisms that initiate and maintain asthma**
Bart Lambrecht, Belgium

12.45 Lunch and sponsor visiting

Session II - Therapeutic utilization of the immune system

Chair: Steven de Taeye

13.45 **Antibody designs and effector function engineering for tailored outcome**
Jan Terje Andersen, Norway

14.30 **Dendritic cells against cancer**
Gerty Schreibelt, Radboudumc, Nijmegen

15.15 Coffee/tea break and sponsor visiting

Session III - Lymphoid structures under the loop

Chair: Febe van Maldegem

16.00 **50 shades of lymphoid structures in cancer**
Karina Silina, Switzerland

16.45 **The immune regulating microenvironment of lymph nodes**
Reina Mebius, Amsterdam UMC, Amsterdam

17.30 Drinks

17.30 - 18:15 Young NVvI Career Workshop

18:15 Diner

Key note lecture

Chair: Michiel van der Vlist

20.00 **Why you can't escape theoretical thinking in immunology**
Thomas Pradeu, France

21.00 Drinks (at own account)

Friday April 10, 2026

08.15 Meet the speaker breakfast sessions

Session IV - Immunology out of the box

Chair: Christine Jansen

09.00 Tick-tumor-tock: circadian myeloid programs in lung cancer

Maria Casanova-Acebes, Spain

09.45 Innate immune cells in multiple sclerosis: a transcriptomic point of view on microglia

Susanne Kooistra, UMC Groningen

10.30 Coffee and sponsor visiting

Session V - Fc receptors at work

Chair: Laia Querol

11.00 Investigating the impact of Fc gamma receptors on the efficacy of antibody therapy for cancer

Stephen Beers, United Kingdom

11.45 Targeting Fc receptors in cancer and auto immunity: IgG or IgA, the ying and yang of antibody therapy

Jeanette Leusen, UMC Utrecht

12.30 Lunch and sponsor visiting

Session VI - T cells: guardians and warriors

Chair: Iosifina Foskolou

13.30 Coping strategies used by regulatory T cells to tolerate self-reactivity

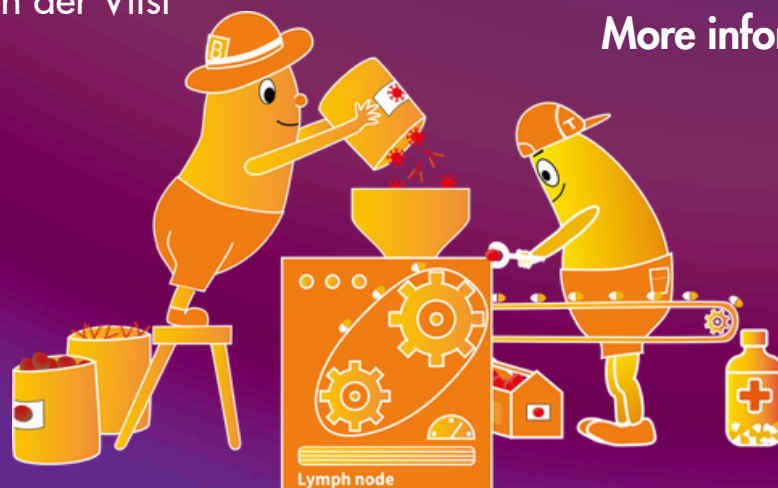
Derk Amsen, Sanquin

14.15 Optimising CAR-T cell sensitivity by engineering extracellular receptor/ligand sizes

Omer Dushek, United Kingdom

15.00 Closure

Michiel van der Vlist



More information available on:

www.nvvi-dsi.nl

or scan QR code:

